

Heathcote Way, Yiewsley, West Drayton, UB7 7RE

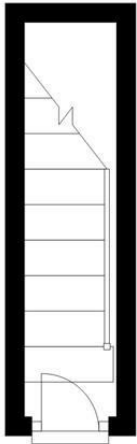
- Two bedroom maisonette
- Furnished
- Parking
- EPC Rating- C
- First floor
- Striking distance to the Train Station
- Available fNOW
- Must be seen

£1,625 PCM

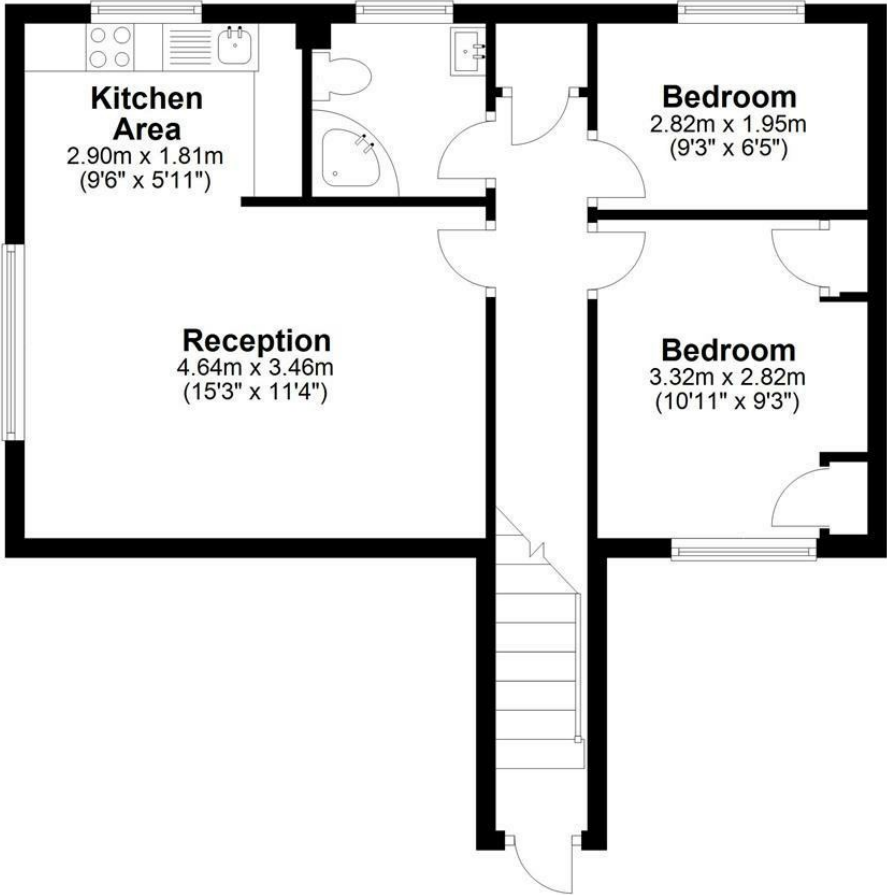
Description

A wonderfully presented two bedroom maisonette, this welcoming first floor property is nestled away in a quite location yet within striking distance of the Elizabeth line and high street that benefits from a variety of local amenities and bus routes. Parking, gas central heating and furnished. Available NOW. You must act quick as this property will not be available for too long.

Ground Floor
Approx. 3.9 sq. metres (42.5 sq. feet)



First Floor
Approx. 49.5 sq. metres (533.2 sq. feet)



Total area: approx. 53.5 sq. metres (575.6 sq. feet)

IMPORTANT NOTICE

These particulars have been prepared upon information supplied by the Vendor and should be verified by your surveyors and solicitors. We have prepared these sales particulars as a general guide to give a broad description of the property. They are not intended to constitute part of an offer or contract. We have not carried out a structural survey and the services, appliances and specific fittings have not been tested. All photographs, measurements, floor plans and distances referred to are given as a guide only and should not be relied upon for the purchase of carpets or any other fixtures or fittings. Lease details service charge and ground rent (where applicable) are given as a guide only and should be checked and confirmed by your solicitor prior to exchange of contracts